

HOT CAKES Top Down Contiguous Cardigan



To Fit Size: 0-3, (6-12, 18-24) months
Approx Chest: 20", (23, 24)
Approx Length: 10 ½", (11 ½, 12 ½)

Materials:

Hot Cakes: 1 - 200g cake, shown in color
11 Sugar Plum

Gauge: 20 sts, 28 rows= 4" in st st on US size 7 (4.5mm) needles *after blocking*, 20 sts= 4" in 1x1 ribbing on US size 7 (4.5mm) needles *slightly stretched*.

Needles: US Size 7 (4.5mm)- 24" circular and DPNs, scrap yarn, US Size G (4.5mm) crochet hook or similar size, 4 stitch markers, 2 stitch holders/scrap yarn.

Pattern is written for smallest size, with larger sizes in parentheses. If only one number is given, it applies to all sizes.

This garment is worked seamlessly from the top-down using the contiguous sleeve method developed by Susie Myers, SusieM on Ravelry.

(<http://www.ravelry.com/people/SusieM>).

Begin

Neck/Shoulders

With crochet hook and scrap yarn, chain a little more than 24, (26, 26). Cut scrap yarn. With circular needle and Main yarn, pick up and k 24, (26, 26) sts into the chain.

Setup Row (WS): P1, pm, p2, pm, p18, (20, 20) sts, pm, p2, pm, p1.

Row 1: Kf&b, sl m, k2, sl m, kf&b, k0, (1, 1), (k4, m1)3x, k4, (5, 5), kf&b, sl m, k2, sl m, kf&b. 31, (33, 33) sts.

Row 2: P1, pf&b, sl m, p2, sl m, pf&b, p to 1 st before m, pf&b, sl m, p2, sl m, pf&b, p1. 35, (37, 37) sts.

ABBREVIATIONS: BO= bind off, dec = decrease, CC= contrast color, CO= cast on, dec= decrease, DPNs= double pointed needles, inc = increase, kf&b= knit into the front and back of stitch, k = knit, m= marker, m1= make one, MC= main color, mm= millimeter, pf&b= purl into the front and back of next stitch, pm= place marker, p = purl, rep= repeat, RS= right side, sl = slip, ssk = slip 1 st as if to knit, slip a second st as if to knit, knit them together through the back loop, st(s) = stitch(es), st st = stockinette st, tog = together, WS = Wrong Side, yo = yarn over

PLYMOUTH YARN®

Free Pattern with Our Compliments

F983

Find Inspiration: www.plymouthyarn.com

Row 3: Kf&b, k1, kf&b, sl m, k2, sl m, kf&b, k2, (3, 3) (k5, m1)3x, k6, (7, 7), kf&b, sl m, k2, sl m, (kf&b)2x, k1. 44, (46, 46) sts.

Row 4: *P to 1 st before m, pf&b, sl m, p2, sl m, pf&b; rep from * once more, p to end of row. 48, (50, 50) sts.

Row 5 (RS): Kf&b, *k to 1 st before m, kf&b, sl m, k2, sl m, kf&b; rep from * once more, k to last 2 sts, kf&b, k1. 54, (56, 56) sts.

Row 6 (WS): P1, *Pattern to 1 st before m, pf&b, sl m, pattern across 2 sts, sl m, pf&b; rep from * once more, pattern to last st, p1. 58, (60, 60) sts.

Rep rows 5 & 6 -- 4, (5, 6) times more. 98, (110, 120) sts on needle.

Sleeve Cap

Row 1 (RS): Kf&b, k to 1 st before marker, pm, kf&b, remove m, k2, remove m, kf&b, pm, k50, (56, 60) sts, pm, kf&b, remove m, k2, remove m, kf&b, pm, k to last 2 sts, kf&b, k1.

104, (116, 126) sts;

21, (24, 27) sts for each front,

50, (56, 60) sts for the back, and 6 sts in-between the m for the sleeves.

Row 2: P1, *Pattern to m, sl m, pf&b, pattern to 1 st before m, pf&b, sl m; rep from * once more, pattern to last st, p1.

Row 3: Kf&b, *k to m, sl m, kf&b, k to 1 st before m, kf&b, sl m; rep from * once more, k to last 2 sts, kf&b, k1.

Rep the last 2 rows once, (once, 0) times more.

124, (136, 136) sts—23, (26, 28) sts for each front, 50, (56, 60) sts for the back, and 14, (14, 10) sts for each sleeve.

Next Row (WS): P1, Pattern across to last st, p1.

Next Row: Kf&b, *k to m, sl m, kf&b, k to 1 st before m, kf&b, sl m; rep from * once more, k to last 2 sts, kf&b, k1—6 sts inc'd.

130, (142, 142) sts—24, (27, 29) sts for each front, 50, (56, 60) sts for the back, and 16, (16, 12) sts for each sleeve.

Next Row (WS): P1, Pattern across to last st, p1.

Next Row: *K to m, sl m, kf&b, k to 1 st before m, kf&b, sl m; rep from * once more, k to end of row. Rep the last 2 rows until there are 36, (38, 40) sts in between each of the m.

170, (186, 198) sts on needle.

Divide for Body

(WS): Pattern 24, (27, 29) sts, remove m, place next 36, (38, 40) sts onto a stitch holder/scrap yarn, remove next marker, pattern to next marker, remove marker, place next 36, (38, 40) sts onto a stitch holder/scrap yarn, remove next marker, pattern across 24, (27, 29) sts. 98, (110, 118) sts on needle.

Work as established until the body from division measures 3 ½", (4, 4 ¼), end having worked a RS Row. P 1 row-inc 1 st across. 99, (111, 119) sts on needle.

Row 1 (RS): K1, *k1, p1; rep from * to last 2 sts, k2.

Row 2: P2, *k1, p1; rep from * to last st, p1.

Rep these 2 rows twice more. BO all sts on next row in rib.

Sleeves

(RS) Slip the 36, (38, 40) sts from the holder onto double points. Join yarn at the center of the underarm and beg working in the rnd in st st.

At the same time, dec 1 st before and after underarm m every 6th, (8th, 8th) round 4, (4, 5) times. 28, (30, 30) sts. When sleeve measures 4", (5 ½, 6) from underarm, work 3 rounds in ribbing as follows:

Rib Rnd: *K1, p1; rep from * around. BO all sts in rib on next rnd (after the 3 rds). Repeat for the other sleeve.

ABBREVIATIONS: BO= bind off, dec = decrease, CC= contrast color, CO= cast on, dec= decrease, DPNs= double pointed needles, inc = increase, kf&b= knit into the front and back of stitch, k = knit, m= marker, m1= make one, MC= main color, mm= millimeter, pf&b= purl into the front and back of next stitch, pm= place marker, p = purl, rep= repeat, RS= right side, sl = slip, ssk = slip 1 st as if to knit, slip a second st as if to knit, knit them together through the back loop, st(s) = stitch(es), st st = stockinette st, tog = together, WS = Wrong Side, yo = yarn over

PLYMOUTH YARN®

Free Pattern with Our Compliments

F983

Find Inspiration: www.plymouthyarn.com

Finishing

Front Rib Band: With RS facing, and main yarn, pick up evenly and k 53, (58, 63) sts from right front BO to shoulder- pm at the end of the front neck shaping, unravel scrap yarn and k across 24, (26, 26) sts- dec 1 st across, pick up evenly and k 53, (58, 63) sts from left front shoulder to BO edge.
129, (141, 151) sts.

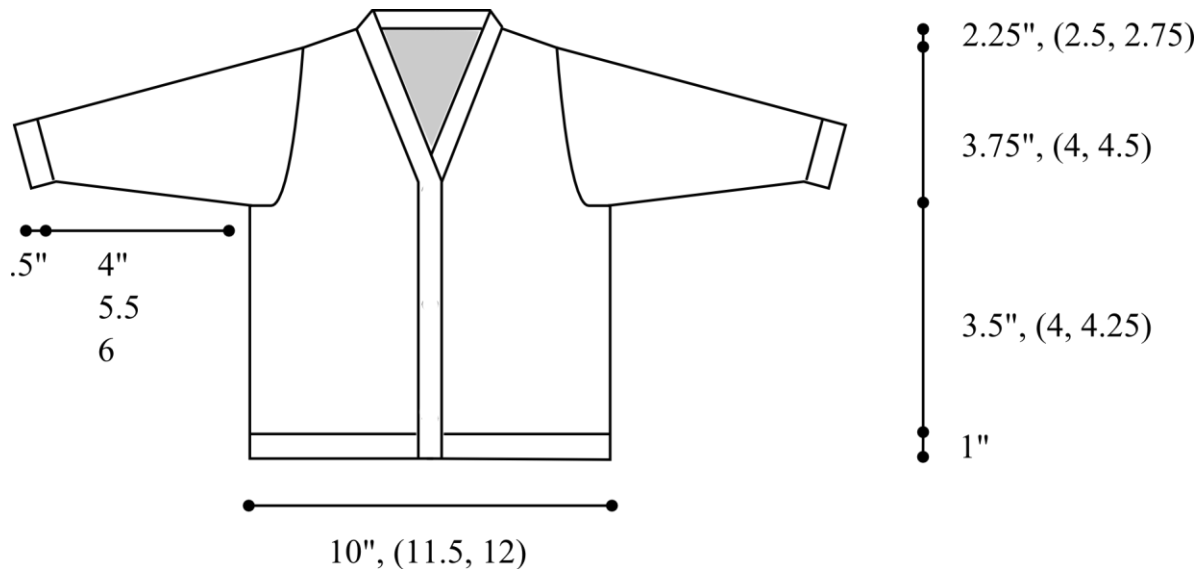
Row 1 (WS): P1, *k1, p1; rep from * across.

Row 2: K1, *p1, k1; rep from * across.

Work 4 more rib rows. BO in rib on next row.

Cut yarn and weave end in.

©2020 Plymouth Yarn Company. 093020jbt



ABBREVIATIONS: BO= bind off, dec = decrease, CC= contrast color, CO= cast on, dec= decrease, DPNs= double pointed needles, inc = increase, kf&b= knit into the front and back of stitch, k = knit, m= marker, m1= make one, MC= main color, mm= millimeter, pf&b= purl into the front and back of next stitch, pm= place marker, p = purl, rep= repeat, RS= right side, sl = slip, ssk = slip 1 st as if to knit, slip a second st as if to knit, knit them together through the back loop, st(s) = stitch(es), st st = stockinette st, tog = together, WS = Wrong Side, yo = yarn over