

Free Pattern with Our Compliments

Find Inspiration: [www.plymouthyarn.com](http://www.plymouthyarn.com)

**ENCORE STARZ  
Child's Fairisle Pullover**

**To Fit Size:** 2, (4, 6, 8, 10) years  
**Approx. Finished Chest:** 24, (26, 28, 30, 32)"  
**Length:** 14, (15, 16, 17, 18)"

**Materials:**

**Encore Starz 2**, (2, 3, 3, 3)—100g balls, MC, color G157 Teal  
 1—100g ball, CC, color G208-White  
**Gauge:** 5 sts, 7 rows = 1" in st st on size 8 needles, 5.5 sts = 1" in ribbing on size 8 needles.  
**Needles:** US Size 8 knitting needles, 2 stitch holders, size 8-16" circular, 4 stitch markers.

Pattern is written for smallest size, with larger sizes in parenthesis. If only one number is given, it applies to all sizes.

**NOTE:** Sizes 2 and 4 will have just 1 full snowflake centered on front as shown in photo. Sizes 6, 8, 10 will have 2 full snowflakes centered on front.



**Back**

With MC, Cast on 67, (73, 79, 83, 89) sts. Work in 1x1 ribbing for 7, (7, 9, 9, 11) rows, decreasing 6, (8, 8, 8, 8) sts evenly across last row.  
 61, (65, 72, 76, 82) sts. Work in st st now and throughout entire back. When piece measures 8 ½", (9, 9 ½, 10, 10 ½) from cast on edge, place a marker on each side of next row to mark sleeve placement. Work even until back measures 14", (15, 16, 17, 18) from cast on edge. Bind off 18, (19, 21, 23, 24) sts at the beginning of next 2 rows. Place remaining 25, (27, 29, 29, 33) sts onto a stitch holder.

**Front**

Work same as back until piece measures 4", (5, 6, 6½, 7 ½) from cast on edge. Begin working snowflake fairisle chart on next row as follows:

(RS): Working chart from right to left, begin with stitch 20 (18, 31, 29, 26), then repeating the chart, and ending with stitch 14(16, 3, 5, 8).

(WS): Working chart from left to right, begin with stitch 14(16, 3, 5, 8), then repeating the chart, and ending with stitch 20(18, 31, 29, 26).

When chart is complete, complete the front with just MC. **At the same time** when piece measures 8 ½", (9, 9 ½, 10, 10 ½) from cast on edge, place a marker on each side of next row to mark sleeve placement. When front measures 12", (13, 14, 14 ½, 15 ½) from cast on edge, begin neck shaping as follows:

**Neck Shaping:** Work to center 15, (17, 18, 18, 20) sts, place those sts onto a stitch holder, attach another ball of yarn, pattern to end of row.

23, (24, 27, 29, 31) sts for each front.

Working both sides at once, decrease 1 stitch at each neck edge every other row 5, (5, 6, 6, 7) times.

18, (19, 21, 23, 24) sts remain for each front.

ABBREVIATIONS: dec = decrease, inc = increase, k = knit, pss0= pass slip stitch over, p = purl, RS= right side, sl = slip, SSK = slip 1 st as if to knit, slip a second st as if to knit, knit them together through the back loop, st(s) = stitch(es), st st = stockinette st, tbl = through back loop, tog = together, WS = Wrong Side, yo = yarn over, wyif = with yarn in front, wyib = with yarn in back.

Free Pattern with Our Compliments

Find Inspiration: [www.plymouthyarn.com](http://www.plymouthyarn.com)

Work even until front measures same as back. Bind off all sts.

### Sleeves

With MC, cast on 37, (37, 39, 39, 41) sts. Work in 1x1 ribbing for 7 rows, decreasing 3 sts evenly across last row. 34, (34, 36, 36, 38) sts.

Work in st st now and throughout entire sleeve. Increase 1 st at each end of every 4<sup>th</sup> row 11, (14, 15, 18, 19) times. 56, (62, 66, 72, 76) sts.

Work even until sleeve measures 9", (10, 11, 12, 13) from cast on edge. Bind off all sts loosely.

### Finishing

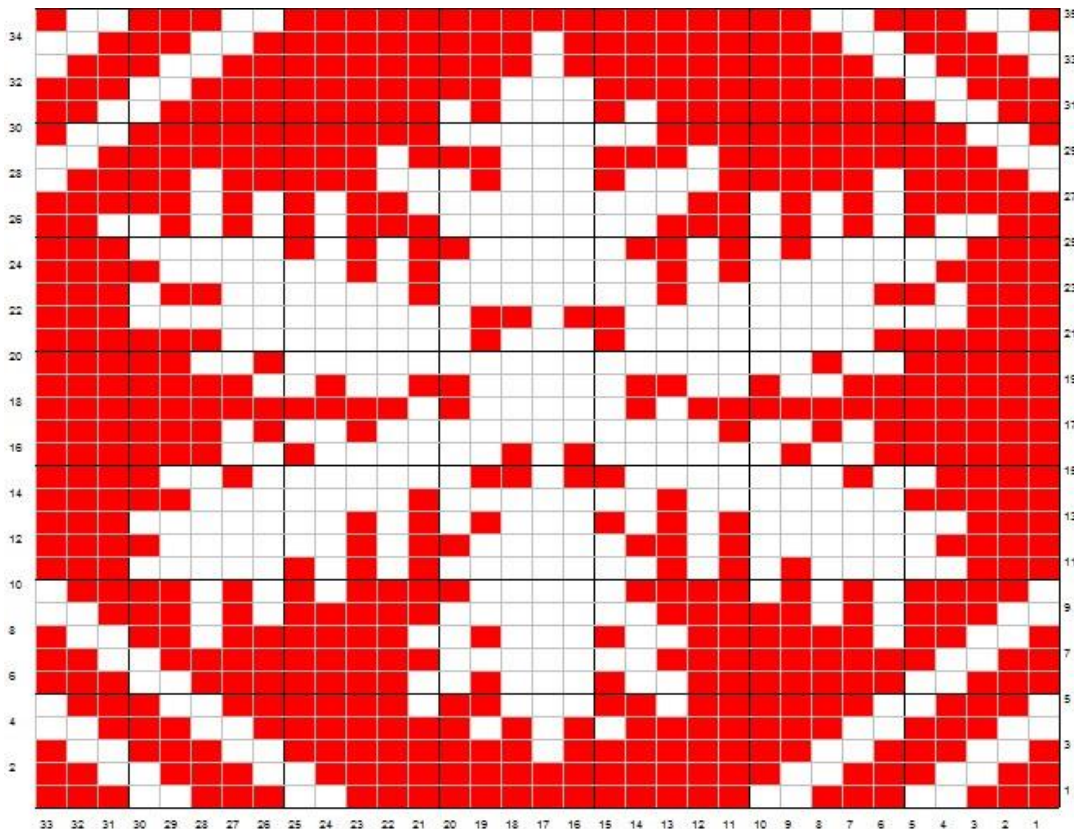
Block to measurements. Sew shoulder seams. Sew sleeve in between the markers on the front and back. Sew side and sleeve seams.

Neck Rib: With circular needle and MC, start at left shoulder and pick up and knit 14, (14, 14, 17, 17) sts along the left front neck to the stitch holder, k15, (17, 18, 18, 20) sts from front stitch holder, pick up and knit 14, (14, 14, 17, 17) sts along the right front neck to the shoulder, k25, (27, 29, 29, 33) sts from back stitch holder- increasing 0, (0, 1, 1, 1) stitch. 68, (72, 76, 82, 88) sts. Place marker. Work in the round in 1x1 ribbing for 5 rounds. Bind off all sts using a stretchy bind off method. Weave in all ends.

©2011 Plymouth Yarn Company. 120717jbt

Snowflake Chart (Over 33 sts)

Red square= MC, Red      White square= CC, White



ABBREVIATIONS: dec = decrease, inc = increase, k = knit, pss0= pass slip stitch over, p = purl, RS= right side, sl = slip, SSK = slip 1 st as if to knit, slip a second st as if to knit, knit them together through the back loop, st(s) = stitch(es), st st = stockinette st, tbl = through back loop, tog = together, WS = Wrong Side, yo = yarn over, wyif = with yarn in front, wyib = with yarn in back.