

# PLYMOUTH YARN®

Free Pattern with Our Compliments

Find Inspiration: [www.plymouthyarn.com](http://www.plymouthyarn.com)

F720

## GALWAY SPORT Fairisle Cowl



### One Size

### Finished Measurements

**Circumference:** 20"

**Height:** 15"

### Materials:

**Galway Sport**—50g balls, 1 each Main Color (MC), Contrast Color #1 (CC#1), and Contrast Color #2 (CC#2) Sample shown in 29 (brown), 756 (orange), and 722 (tan)

**Needles/Notions** US size 5 (3.75mm) 16" circular needle, or size needed to obtain gauge, One removable stitch marker, Tapestry needle

### Gauge

24 sts and 28 rows = 4" in Stockinette stitch

When reading the charts, work all rounds from right to left.

### Cowl

With CC #1 and using the long tail cast on, CO 120 sts. Join for working in the round, taking care not to twist stitches, and pm for beg of round. Break CC#1 and join MC. Knit one round.

**Ribbing:** \*K2, p1. Rep from \* to end of round.

Work ribbing for 7 rnds.

Knit 2 rounds.

Work **Chart A** in MC and CC #2.

Knit 2 rounds MC. Work **Chart B** in CC #1 and CC #2.

Knit 2 rounds in MC. Work **Chart A** in MC and CC #2.

Knit 2 rounds MC. Work **Chart C** in MC and CC #1.

Knit 2 rounds in MC. Work **Chart A** in MC and CC #2.

Knit 2 rounds MC. Work **Chart D** in MC and CC #1.

Knit 2 rounds in MC. Work **Chart A** in MC and CC #2.

Knit 2 rounds MC. Work **Chart E** in CC #1 and CC #2.

Knit 2 rounds in MC. Work **Chart A** in MC and CC #2.

Knit 2 rounds MC. Work **Chart F** in MC and CC #1.

Knit 2 rounds in MC. Work **Chart A** in MC and CC #2.

Knit 2 rounds MC. Work **Chart G** in CC #1 and CC #2.

Knit 2 rounds in MC. Work **Chart A** in MC and CC #2.

**Abbreviations:** Beg: beginning, CO: cast on, K: knit, P: purl, PM: place marker, Rep: repeat, Rnd(s): round(s), St(s): stitch(es)

# PLYMOUTH YARN®

Free Pattern with Our Compliments

F720

Find Inspiration: [www.plymouthyarn.com](http://www.plymouthyarn.com)

Knit 2 rounds MC. Break MC. With CC#2, knit one round.

With CC #2, work k2, p1 ribbing for 7 rnds. Break CC #2 and join CC #1. Bind off loosely in ribbing.

## Finishing

Work in loose ends.

Block lightly to finished measurements.

Chart A

6	5	4	3	2	1	
	0		0		0	4
0		0		0		3
	0		0		0	2
0		0		0		1

Chart B

12	11	10	9	8	7	6	5	4	3	2	1	
0	0	0	0	0	—	0	0	0	0	0	—	5
—	0	0	0	—	—	—	0	0	0	—	—	4
—	—	0	—	—	0	—	—	0	—	—	0	3
0	—	—	—	0	0	0	—	—	—	0	0	2
0	0	—	0	0	0	0	0	—	0	0	0	1

Chart C

12	11	10	9	8	7	6	5	4	3	2	1	
			—	—	—	—		—	—	—	—	5
—	—	—		—	—				—	—		4
—		—	—		—	—		—	—		—	3
			—	—		—	—	—		—	—	2
—		—	—	—	—				—	—	—	1

Chart D

12	11	10	9	8	7	6	5	4	3	2	1	
—				—				—				5
—	—				—		—				—	4
—	—	—				—				—	—	3
—	—				—		—				—	2
—				—				—				1

# PLYMOUTH YARN®

Free Pattern with Our Compliments

Find Inspiration: [www.plymouthyarn.com](http://www.plymouthyarn.com)

F720

Chart E

	12	11	10	9	8	7	6	5	4	3	2	1	
	—	0	—	—	—	0	—	—	—	0	—	—	3
2	0	—	0	—	0	—	0	—	0	—	0	—	
	—	—	—	0	—	—	—	0	—	—	—	0	1

Chart F

	12	11	10	9	8	7	6	5	4	3	2	1	
4			—	—			—	—			—	—	
	—			—	—			—	—			—	3
2	—	—			—	—			—	—			
		—	—			—	—			—	—		1

Chart G

10	9	8	7	6	5	4	3	2	1	
—	—	—	0	0	—	—	—	0	0	5
0	—	—	—	0	0	—	—	—	0	4
—	—	—	—	—	—	—	—	—	—	3
0	—	—	—	0	0	—	—	—	0	2
—	—	—	0	0	—	—	—	0	0	1



Main Color



Contrast Color #1



Contrast Color #2

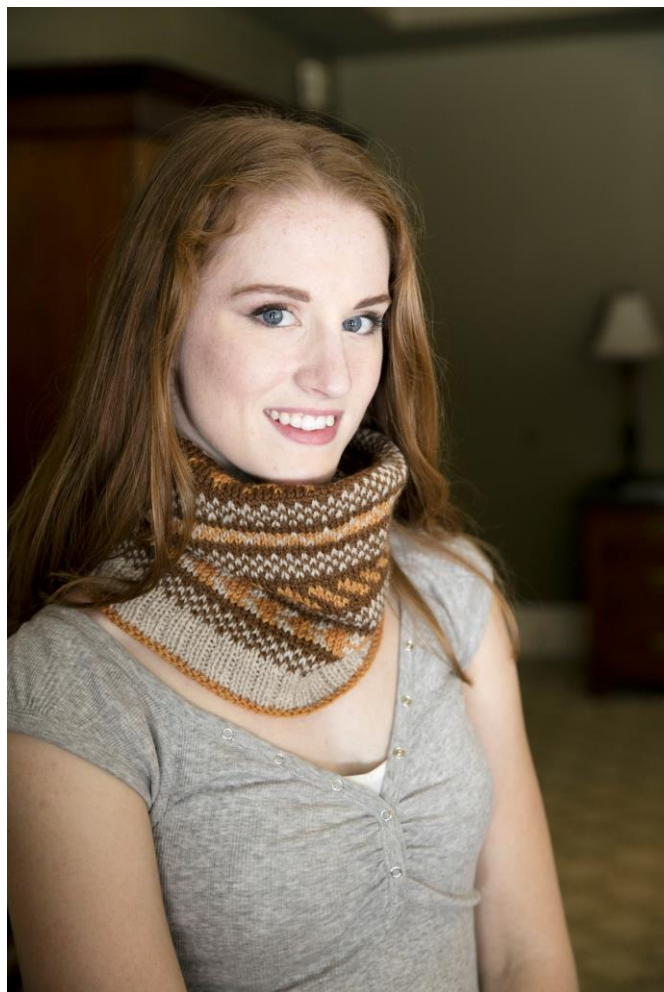
©2016 Plymouth Yarn Company. 071018jbt  
Designed by Erika Flory

# PLYMOUTH YARN®

Free Pattern with Our Compliments

Find Inspiration: [www.plymouthyarn.com](http://www.plymouthyarn.com)

F720



**Abbreviations:** Beg: beginning, CO: cast on, K: knit, P: purl, PM: place marker, Rep: repeat, Rnd(s): round(s), St(s): stitch(es)