

DK MERINO SUPERWASH
Fairisle Cowl



Approximate Finished Measurements
after blocking
56” length, 14 ½” circumference

Materials:

DK Merino Superwash:

2—50G skeins, color 1019 Cornflower MC

3—50G skeins, color 1101 Mosaic Blue CC1

2—50G skeins, color 1124 Tan CC2

Gauge: 22 sts, 30 rows= 4” in st st in the round (k every round) on US Size 6 (4mm) knitting needles *after blocking*.

Needles/Notions: US Size 6 (4mm)- 16” circular knitting needle, 1 st marker (m), scrap yarn, 1 spare circular in US Size 6 (4mm) length, crochet hook size 4mm for provisional Cast On.

The cowl is worked seamlessly in the round. There is a provisional CO that is worked, which will be removed to join the beginning and end of the piece into a loop.

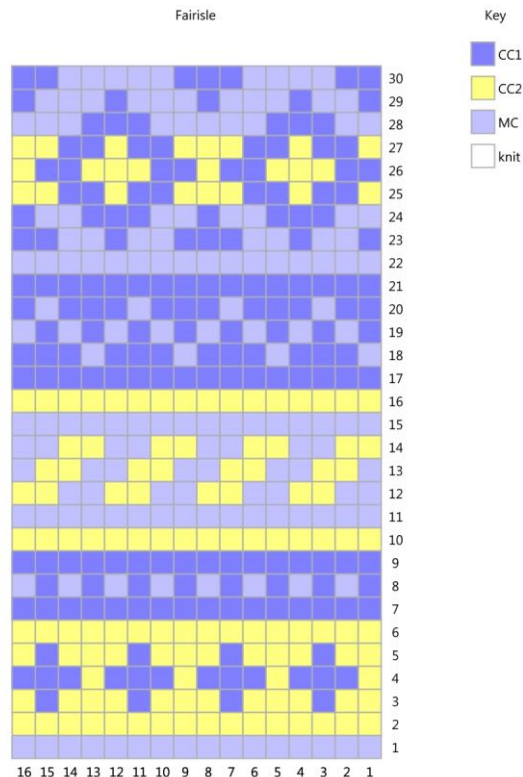
Begin

With scrap yarn and crochet hook, chain/provisional CO a little more than 80 sts. With MC and circular, pick up and k 80 sts into the provisional CO. Join in the round, being careful not to twist. PM.

Work fairisle chart rnds 1-30 fourteen times total. (Piece will measure approximately 56” in length). Unzip the scrap crochet chain and carefully place those sts onto the spare circular needle.

With k side facing, making sure there isn’t a twist in the cowl, work “Kitchener st” method to join the beg of the cowl to the end of the cowl. Weave in all ends. Block to measurements.

©2015 Plymouth Yarn Company. 091515vle
 Designed by Vanessa Ewing



PLYMOUTH YARN®

F669

DESIGN • STUDIO
FREE WITH YARN PURCHASE



ABBREVIATIONS: beg= begin(ning), CC= contrast color, CO= cast on, k = knit, m= marker, mm= millimeter, MC= main color, PM/pm= place marker, rnd= round, RS= right side, st(s) = stitch(es), st st = stockinette st