

STAINED GLAZZ
Headband



To Fit Average Adult Head
Approximate Finished Measurements *after blocking*
 5 ½” width, 17 ½” circumference.

Materials:

Stained Glazz: 1—50G ball, color 7 Red

Gauge: 16 sts, 22 rows= 4” in st st on US Size 8 (5mm) or size to obtain gauge, *after blocking*.

Needles/Notions: US Size 8 (5mm) straight knitting
 Needle, cable needle.

Please note: You can follow the chart or the written instructions. If you are following the chart, work WS Rows (odd numbered rows) from left to right, and RS Rows (even numbered rows) from right to left.

Begin

CO 24 sts. Work in charted or written pattern st as follows:

Rows 1 and 7 (WS): K4, p3, k2, p6, k2, p3, k4.

Rows 2 and 8: K2, p2, k3, yo, p2, k6, p2, yo, k3, p2, k2.

Rows 3 and 9: K4, p4, k2, p6, k2, p4, k4.

Rows 4 and 10: K2, p2, k1, k2tog, yo, k1, p2, k6, p2, k1,

yo, ssk, k1, p2, k2.

Rows 5 and 11: K4, p2togtbl, p2, k2, p6, k2, p2, p2tog, k4.

Row 6: K2, p2, k1, yo, k2tog, p2, C6F, p2, ssk, yo, k1, p2, k2.

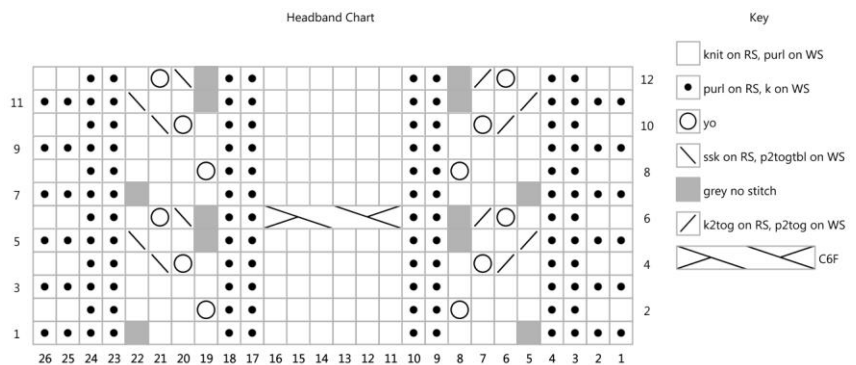
Row 12: K2, p2, k1, yo, k2tog, p2, k6, p2, ssk, yo, k1, p2, k2.



Work these 12 rows for 8 total repeats (96 rows). Then work row 1 once more. Piece will measure 17 ½” from CO edge. BO all sts in k on next row and seam together the CO and BO edges. Weave in all ends and block.

©2015 Plymouth Yarn Company.
 031315vle.

Designed by Vanessa Ewing



ABBREVIATIONS: C6F= sl 3 sts to cable needle and hold to front, k3, k3 from cable needle, CO: cast on, inc= increase, K: knit, K2tog: knit two together, m= marker, P: purl, rep= repeat, RS: right side, SSK: slip, slip, knit these two stitches together, St(s): stitch(es), st st= stockinette stitch, tbl= through back loop, tog= together, WS: wrong side, YO= yarn over