

Please note: Charts must be printed in color

**LINAZA
Shawl**



Approximate Finished Measurements *after blocking*

Wingspan: 48" after blocking

Back length: 19" after blocking

Materials:

Linaza: 1—100g skein, color 1641 Robin's Egg

Gauge: 22 sts, 32 rows= 4" in st st on US Size 6 (4mm) or size to obtain gauge, *after blocking.*

Needles/Notions: US Size 6 (4mm)-24" circular, 2 removable stitch markers, tapestry needle.

Note: When working the chart, work all RS Rows from right to left. Work WS Rows from left to right.

Lace Arches (multiple of 8 sts)

Rows 1 and 3 (RS): P1, k1, p4, k1, p1.

Rows 2 and 4: K1, p1, k4, p1, k1.

Row 5: P1, yo, ssk, p2, k2tog, yo, p1.

Row 6: K1, p2, k2, p2, k1.

Row 7: P2, yo, ssk, k2tog, yo, p2.

Row 8: K2, p4, k2.

These 8 rows make up the pattern st.

Begin

Garter Tab

CO 3 sts. Knit 7 rows. Do not turn work. Pick up and knit 5 sts along the side edge, then pick up and knit 3 sts along CO edge: 11 sts.

Set-up (WS): K3, p3, pm, p2, k3.

Shawl Body

Stockinette Section

Row 1 (RS): K3, yo, k to m, yo, sl m, k1, yo, k to last 3 sts, yo, k3—4 sts inc'd. 15 sts.

Row 2: K3, yo, p to last 3 sts, yo, k3—2 sts inc'd. 17 sts.

Rep these 2 rows 27 times more. 179 sts.

Work Row 1 once more. 183 sts on needle.

Next Row (WS): K3, yo, p2tog, p to last 5 sts, p2tog, yo, k3. 183 sts on needle.

Lace Arches Section

Work Lace Arches Chart 1—24 sts inc'd. 207 sts.

Work Lace Arches Chart 2—24 sts inc'd. 231 sts.

Repeat these 2 charts twice more

(Lace Arches Chart 1, Lace Arches Chart 2, Lace Arches Chart 1, and Lace Arches Chart 2)—96 sts inc'd.

327 sts.

Edging

Row 1 (RS): K3, yo, (p1, yo, ssk, p2, k2tog, yo, p1); rep from () to m, yo, sl m, k1, yo, rep from () to last 3 sts, yo, k3.

Row 2: K3, yo, k1, (k1, p2, k2, p2, k1) rep from () to 2 sts before m, k1, p1, sl m, k1, rep from () to last 4 sts, k1, yo, k3.

Row 3: K3, yo, p2, (p2, yo, ssk, k2tog, yo, p2); rep from () to 1 st before m, p1, yo, sl m, k1, yo, p1, rep from () to last 4 sts, p1, yo, k3.

Row 4: K3, yo, k2, (k3, yo, p2, yo, k3) rep from () to 3 sts before m, k2, p1, sl m, k2, rep from () to last 6 sts, k3, yo, k3.

Bind off row/ Row 5: BO 7 sts, *BO 4 sts, cable-CO 5 sts onto right hand needle, k1, st (7 sts now on right hand needle), then slip 6 sts over the last st knit (1 st remains on right hand needle), BO 4 sts; rep from * to 2 sts before m, BO 2 sts, remove m, BO 4 sts; rep from * to last 6 sts, BO last 6 sts.

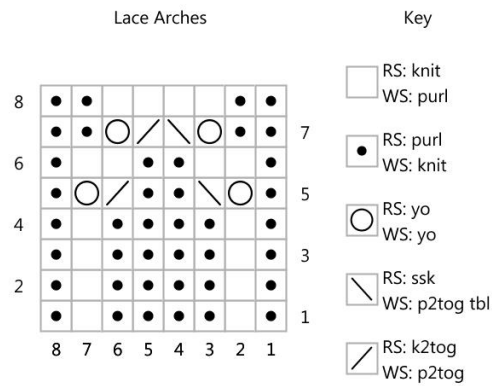
Finishing

Work in loose ends.

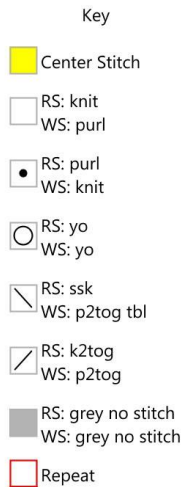
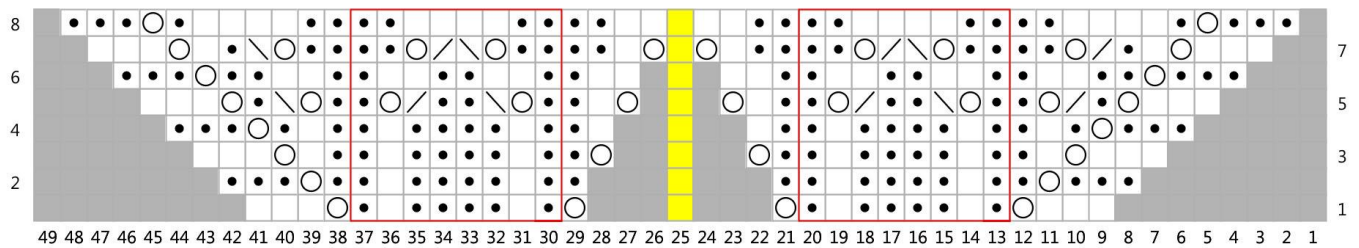
Wet block to finished measurements, pinning out the BO edge.

©2015 Plymouth Yarn Company. 031615vle
Designed by Vanessa Ewing. 070116jbt

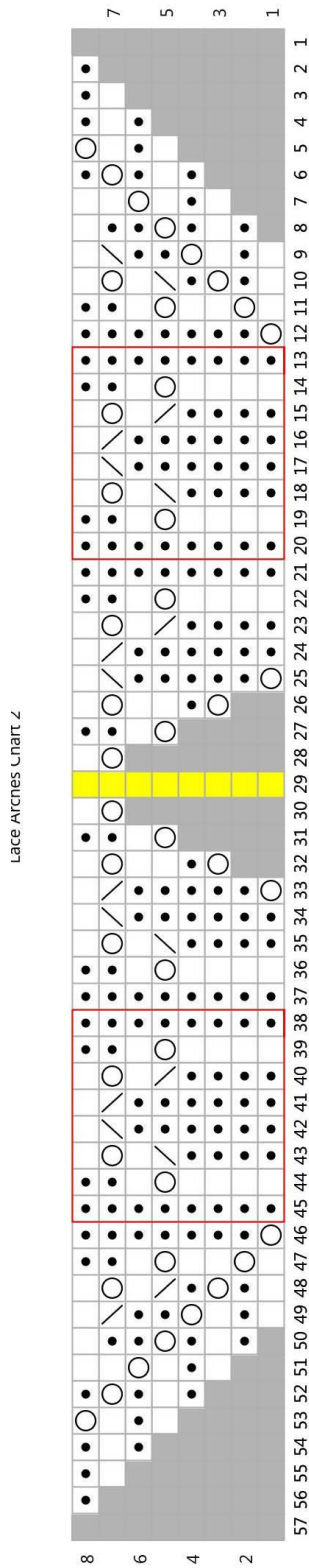




Lace Arches Chart 1



ABBREVIATIONS: CO= cast on, inc= increase, K: knit, K2tog: knit two together, m= marker, P: purl, pm= place marker, rep= repeat, RS: right side, SSK: slip, slip, knit these two stitches together, St(s): stitch(es), st st= stockinette stitch, tbl= through back loop, tog= together, WS: wrong side, YO= yarn over



- Key
- Center Stitch
 - RS: knit
WS: purl
 - RS: purl
WS: knit
 - RS: yo
WS: yo
 - RS: ssk
WS: p2tog tbl
 - RS: k2tog
WS: p2tog
 - RS: grey no stitch
WS: grey no stitch
 - Repeat

ABBREVIATIONS: CO: cast on, inc= increase, K: knit, K2tog: knit two together, m= marker, P: purl, pm= place marker, rep= repeat, RS: right side, SSK: slip, slip, knit these two stitches together, St(s): stitch(es), st st= stockinette stitch, tbl= through back loop, tog= together, WS: wrong side, YO= yarn over