

**KID GLOSS and TORIA  
 Honeycomb Cowl**



**Approximate Measurements:**  
 7 1/4" wide x 36" circumference

**Materials:**

**Kid Gloss:** 1—25G ball, color 407 Black- CC

**Toria:** 1—25G ball, color 53 Pink Gold Black- MC

**Gauge:** 24 sts, 40 rows= 4" in **Honeycomb Pattern** on US Size 6 (4mm) knitting needles.

**Needles:** US Size 6 (4mm)- 24" circular knitting needle, 1 st marker (m).

**Honeycomb Pattern** (Multiple of 8 sts)

**Rnds 1-7:** With MC: \*Sl2, k6; rep from \* around.

**Rnds 8 and 10:** With CC: P all sts.

**Rnd 9:** With CC: K all sts.

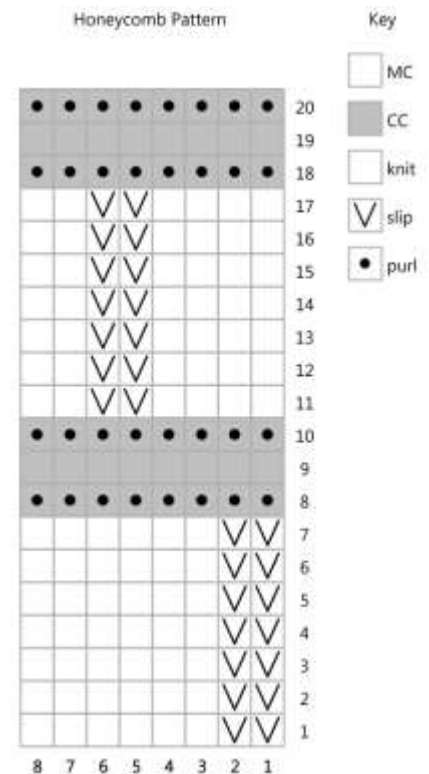
**Rnds 11-17:** With MC: \*K4, sl2, k2; rep from \* around.

**Rnd 18:** With CC: P all sts.

**Rnd 19:** K all sts.

**Rnd 20:** With CC: P all sts.

Rep these 20 rounds for pattern st.



**Begin**

(Sl all sts wyib.)

With CC, loosely CO 216 sts. Join in the rnd, being careful not to twist. PM.

**Rnds 1 and 3:** P all sts.

**Rnd 2:** K all sts.

Beg working chart or written directions for **honeycomb pattern**, starting with rnd 1. If you are working the chart directions, work all rnds from right to left. Work 69 rnds of pattern st—you will end having worked rnd 9 of **honeycomb pattern**. BO all sts in p on next rnd loosely in CC. Weave in all ends and block lightly.

©2014 Plymouth Yarn Company. 032114vle

ABBREVIATIONS: beg= begin(ning), BO= bind off, CC= contrast color, CO= cast on, k = knit, m- marker, MC= main color, p= purl, pm= place marker, rep= repeat(ing), rnd= round, RS= right side, sl = slip 1 st purlwise with yarn in back, st(s) = stitch(es), st st = stockinette st, tog = together, wyib = with yarn in back.