

**SPAGO AND WMSW
Adult Cable Brim Hat**



To Fit Size:
Adult Small/Medium, (Adult Large)
Approximate Circumference:
21", (24)

Materials:

Spago:

1, (1)—50g ball, color 4000 Reds

Worsted Merino SW:

1, (1)—100g skein, color 16

Gauge: 8 sts, 16 rows= 4" in st st on
US size 11 (8mm) needles and **Spago,**

24 sts, 24 rows= 4" in Complementary
Diamonds on US Size 7 (4.5mm)
needles and **WMSW.**

Needles: US Size 11 (8mm) - 24" circular
needle, US Size 11 (8mm) DPNs,
US size 7 (4.5mm) straight needles, stitch
marker (m), scrap yarn, spare needle, cable
needle.

Complementary Diamonds (work over 24 sts)

Row 1 (RS): S11, (p2, T2B)2x, T2B, T2F, (T2F, p2)2x, p1, k2.

Row 2: P2, (K3, p1)2x, k1, p1, k2, p1, k1, p1, k3, p1, k2, p1.

Row 3: S11, p1, T2B, p2, (T2B)2x, p2, (T2F)2x, p2, T2F, p2, k2.

Row 4: P2, k2, p1, k3, p1, k1, p1, k4, p1, k1, p1, k3, p1, k1, p1.

Row 5: S11, T2B, p2, (T2B)2x, p4, (T2F)2x, p2, T2F, p1, k2.

Row 6: P2, k1, p1, k3, p1, k1, p1, k6, p1, k1, p1, k3, p2.

Row 7: S11, T2F, p2, (T2F)2x, p4, (T2B)2x, p2, T2B, p1, k2.

Row 8: same as row 4.

Row 9: S11, p1, T2F, p2, (T2F)2x, p2, (T2B)2x, p2, T2B, p2, k2.

Row 10: same as row 2.

Row 11: S11, p2, T2F, p2, (T2F)2x, (T2B)2x, p2, T2B, p3, k2.

Row 12: P2, k4, p1, k3, p1, k1, p2, k1, p1, (k3, p1)2x.

Rep these 12 rows for pattern st.

Pattern is written for smallest size, with larger sizes in parenthesis. If only one number is given, it applies to both sizes.

Begin

Brim

With US size 7 and scrap yarn, CO 24 sts. Switch to WMSW and work setup row as follows:

Setup Row (WS): P2, k4, p1, k3, p1, k1, p2, k1, p1, (k3, p1)2x.

Beg working either the written or the charted instructions for the Complementary Diamonds. If working the charted instructions, work RS Rows from right to left and WS Rows from left to right.

ABBREVIATIONS: beg= begin(ning), BO= bind off, dec= decrease, DPNs= double pointed needles, inc= increase, k = knit, m= marker, pm= place marker, rem= remain(ning), rep= repeat(ing), RS= right side, sl = slip 1 st purlwise with yarn in back, SSK = slip 1 st as if to knit, slip a second st as if to knit, knit them together through the back loop, st(s) = stitch(es), st st = stockinette st, T2B= sl 1 st to cable needle and hold to back, k1, p1 from cable needle, T2F= sl 1 st to cable needle and hold to front, p1, k1 from cable needle, tbl = through back loop, tog = together, WS = Wrong Side, yo = yarn over, wyif = with yarn in front, wyib = with yarn in back.

Work until brim measures 19", (20) from CO edge, end having worked a WS Row.

(Brim should stretch snugly around your head.)

Cut yarn, leaving a long tail for sewing (approximately 3 yards). Thread yarn through tapestry needle. Unravel the scrap yarn from the CO and place those sts onto a spare needle.

Work "Kitchener st" method to join the 2 ends together as follows:

(hold the needles parallel with WS facing each other)

Step 1: Front Needle: Sl 1 st knitwise and off the needle, sl next st purlwise but keep on the needle.

Step 2: Back Needle: Sl 1 st purlwise and off the needle, sl next st knitwise but keep on the needle.

Rep these 2 steps until all sts have been worked. Fasten off.

Pick up along brim

With RS facing, size 11-24" circular and Spago,

Start at the Kitchener stitch seam (which will be the back of the hat) and pick up and k42, (48) sts evenly along the entire slip st edge of the brim. PM to mark beg of round. Work in st st (k every round) until hat measures 5 1/2" from bottom edge of brim.

Shape Top

(switch to DPNs when necessary)

Round 1: *K4, k2tog; rep from * around—7, (8) sts dec'd. 35, (40) sts.

Rounds 2, 4, 6, 8: K all sts.

Round 3: *K3, k2tog; rep from * around—7, (8) sts dec'd. 28, (32) sts.

Round 5: *K2, k2tog; rep from * around—7, (8) sts dec'd. 21, (24) sts.

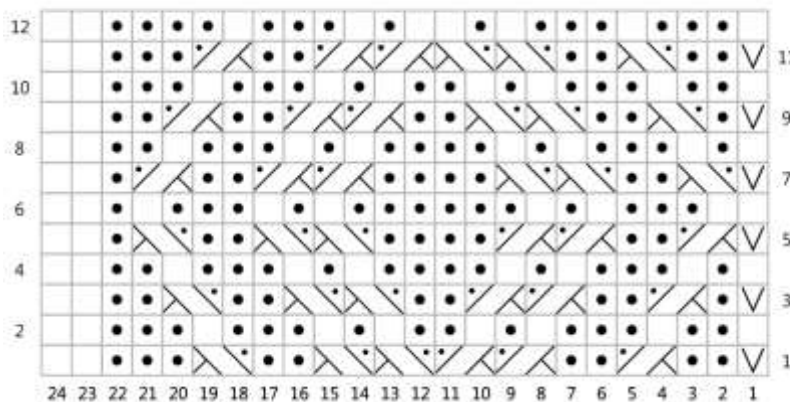
Round 7: *K1, k2tog; rep from * around—7, (8) sts dec'd. 14, (16) sts.

Round 9: *k2tog; rep from * around—7, (8) sts dec'd. 7, (8) sts.

Round 10: K1, (0) st, *K2tog; rep from * around—3, (4) sts dec'd. 4 sts rem.

Cut yarn and draw through rem sts. Weave in all ends.

Complementary Diamonds Chart



Key

- RS: knit
WS: purl
- RS: purl
WS: knit
- T2B
- T2F
- slip st purlwise with yarn in back

©2014 Plymouth Yarn Company. 030614vle

ABBREVIATIONS: beg= begin(ning), BO= bind off, dec= decrease, DPNs= double pointed needles, inc= increase, k = knit, m= marker, pm= place marker, rem= remain(ning), rep= repeat(ing), RS= right side, sl = slip 1 st purlwise with yarn in back, SSK = slip 1 st as if to knit, slip a second st as if to knit, knit them together through the back loop, st(s) = stitch(es), st st = stockinette st, T2B= sl 1 st to cable needle and hold to back, k1, p1 from cable needle, T2F= sl 1 st to cable needle and hold to front, p1, k1 from cable needle, tbl = through back loop, tog = together, WS = Wrong Side, yo = yarn over, wyif = with yarn in front, wyib = with yarn in back.