

**PLYMOUTH YARN®**

DESIGN • STUDIO  
FREE WITH YARN PURCHASE

**F547**

**DEAIRE**  
**Fairisle Lace Cowl**



**Approximate Dimensions:**  
10” wide x 40” long

**Materials:**

**DeAire:**

2—100G skeins, color 100 White,  
MC

1—100G skein, color 301 Brown,  
CC

**Gauge:** 8 sts, 14 rows= 4” in st st  
on US Size 15 (10mm) knitting  
needle,

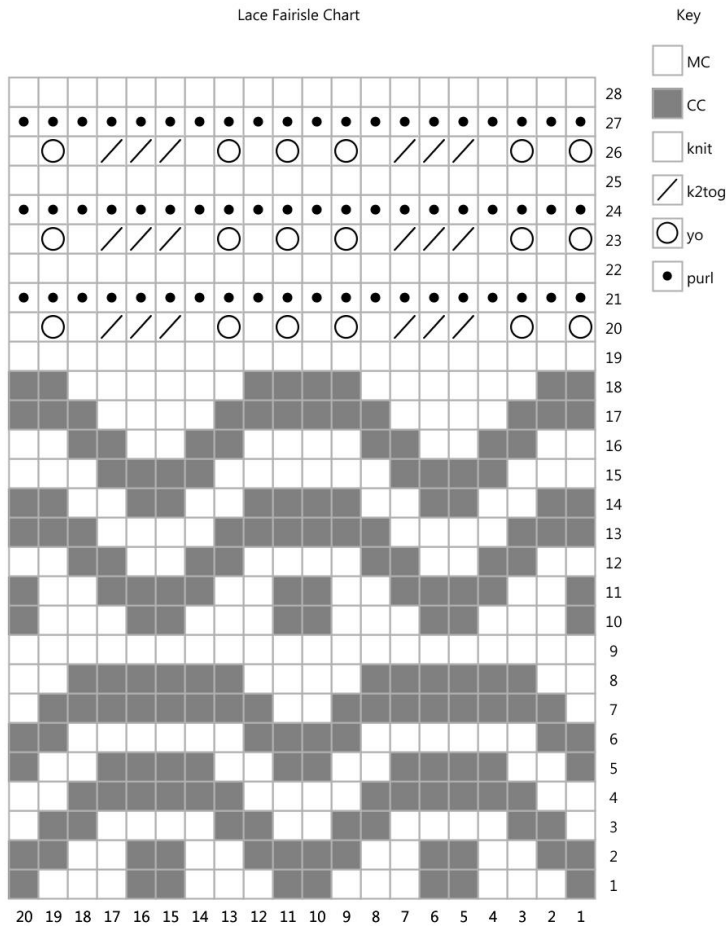
One rep of the chart= 8” long

**Needles:** US Size 15 (10mm) -16”  
circular needle + 1 spare needle in  
same size and length,

1 st marker (m), bulky weight scrap  
yarn, very large crochet hook- US  
size L (8mm) or larger.

ABBREVIATIONS: beg= begin(ning), CC= contrast color, CO= cast on, m= marker, MC= main color, pm= place marker, p = purl,  
rep= repeat, sl = slip, st(s) = stitch(es), st st = stockinette st, tog = together, yo = yarn over

**Chart Instructions:** Work all rounds from right to left. During rounds 19-28, carry the CC yarn up the inside of the cowl (you do not need to cut CC).



**Begin**

With scrap yarn and crochet hook, Chain 40 sts.

Cut yarn. With knitting needles and MC, pick up and k 40 sts along the chain. Join in the round and pm.

Beg working chart. When 4 total rep have been worked + 27 rounds (139 rounds), cut CC and join the CO edge to the live sts on needle as follows:

1. Unpick the crochet chain and place those sts onto the spare needle.
2. RS facing, work “Kitchener stitch” method, joining the two ends together, making sure the sts are lined and up there isn’t a twist in your cowl/tube. Weave in all ends.

©2014 Plymouth Yarn Company. 063014vle