

CASHMERE PASSION
Reversible Chevron Cowl

Approximate Measurements:
20” circumference and 10” high

Materials:

Cashmere Passion: 1—50G skein, color 17

Gauge: 20 sts and 26 rows = 4” using US size 8 (5 mm) needles.

Needles: US size 8(5 mm) 16” circular needle

Accessories: 1 stitch marker, tapestry needle.

Chevron Pattern –in the round

Definition: (multiples of 22 sts)

Round 1: * k1[k2tog, yo] 5 times, k1, [yo, ssk] 5 times; rep from * to end.

Round 2: *k1, p10; rep from * to end.

Repeat Rounds 1-2 for Chevron Pattern.

Begin

CO 110 sts. Place Marker and work in the round making sure not to twist sts.

Work Chevron Pattern 6 times around, then repeat Round 1, 1 more time. (7 eyelet rounds in all).

Body of Cowl:

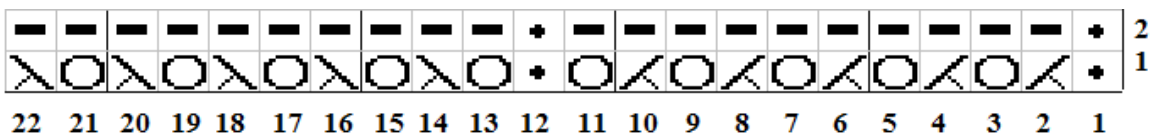
Work Round 2 until body of cowl measures 5” or desired height.

Next work Chevron Pattern 6 times starting with Round 1.

After this is worked 6 times, work one more Round 1.

Bind off loosely.

Weave in all ends. Lightly steam.



©2013 Plymouth Yarn Company. 120413cab

ABBREVIATIONS: beg=beginning, BO= bind off, CO= cast on, dec = decrease, garter stitch=knit every row, KFB=knit into the front and back of stitch, k2tog=knit 2 stitches together, k = knit, pm=place marker, , st(s) = stitch(es).