

**ALPACA PRIMA**  
**Duplicate Stitch Argyle Beret for the Family**



**To Fit: Baby, (Child, Adult)**  
**Brim Circumference: 16", (18, 20 1/2)**

**Materials:**

**Alpaca Prima:**

**1—100g skein, color 100 Cream MC**

**1—100g skein, color 1700 Periwinkle CC**

**Gauge:** 28 sts, 40 rows= 4" in st st on US size 2 (2.75mm) needles.

**Needles:** US Size 1 (2.25mm) & 2 (2.75 mm)- 16" circular needle, US Size 2 (2.75mm) DPNs, stitch marker, darning needle.

Pattern is written for smallest size, with larger sizes in parenthesis. If only one number is given, it applies to all sizes.

The beret is made in st st in the solid color. Duplicate stitch is added after the beret is k.

**Beret**

With smaller circular and MC, CO 112, (128, 144) sts. Join in the round, being careful not to twist. PM.

**Rib Round:** \*K1, p1; rep from \* around.

Rep this round for 1", (1 1/4, 1 1/2).

Switch to larger circular.

**Inc Round:** \*K4, m1; rep from \* around—28, (32, 36) sts inc'd. 140, (160, 180) sts.

Beg working in st st.

When st st measures 3 3/4", (5, 6 1/2), beg dec as follows:  
 (switch to DPNs when necessary)

**Dec Round 1:** \*K8, k2tog; rep from \* around—126, (144, 162) sts.

**Dec Round 2, 4, 6, 8, 10, 12:** K across all sts.

**Dec Round 3:** \*K7, k2tog; rep from \* around—112, (128, 144) sts.

**Dec Round 5:** \*K6, k2tog; rep from \* around—98, (112, 126) sts.

**Dec Round 7:** \*K5, k2tog; rep from \* around—84, (96, 108) sts.

**Dec Round 9:** \*K4, k2tog; rep from \* around—70, (80, 90) sts.

**Dec Round 11:** \*K3, k2tog; rep from \* around—56, (64, 72) sts.

**Dec Round 13:** \*K2, k2tog; rep from \* around—42, (48, 54) sts.

**Dec Round 14:** \*K1, k2tog; rep from \* around—28, (32, 36) sts.

**Dec Round 15:** \*K2tog; rep from \* around—14, (16, 18) sts.

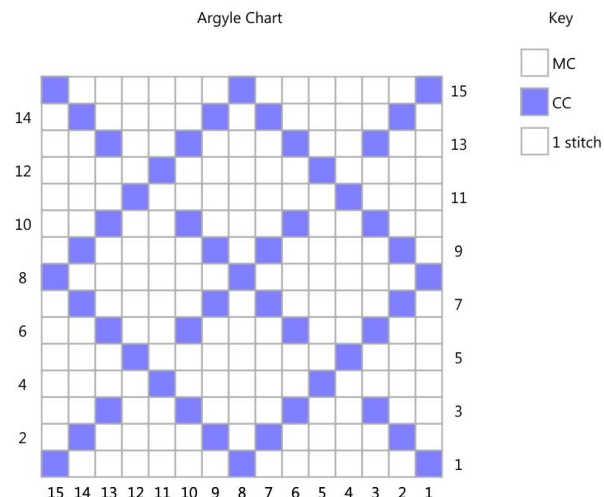
**Dec Round 16:** \*K2tog; rep from \* around—7, (8, 9) sts.

Cut yarn and draw through rem sts.

**Finishing**

Block lightly. Following the chart to the right, work duplicate stitch with the CC using the darning needle—starting at the first round worked in st st. Work in argyle up to but not including the dec rounds. Weave in all ends.

Argyle Chart



©2013 Plymouth Yarn Company. 091813vle

ABBREVIATIONS: beg= begin(ning), BO= bind off, CC= contract color, CO= cast on, cont= continue, dec = decrease, DPN= double pointed needle, inc = increase, k = knit, m= marker, m1- make one, MC= main color, PM= place marker, pssso = pass slip stitch over, p = purl, rem= remaining, rep= repeat(ing), RS= right side, st(s) = stitch(es), st st = stockinette st, tog = together