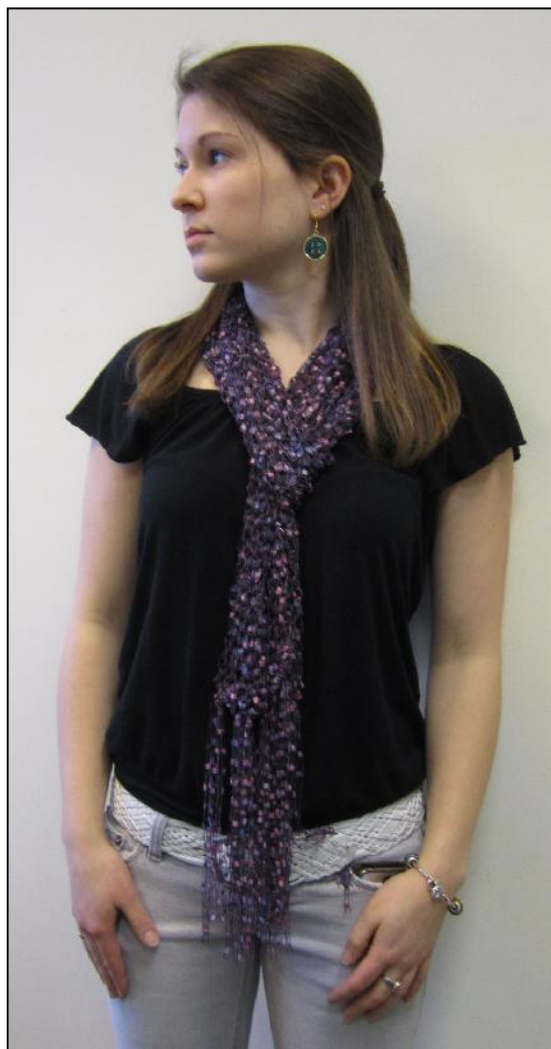


EROS II Scarf



Materials: 2 balls Eros II shown in color 7107

Size: 5 x 65"

Needles: Size US 11 needles.

Gauge: ~12 sts = 4" over pattern st using double strand of yarn.

Shawl:

Cut 44 pieces of Eros II into 18" sections. Set aside.

Hint: Cut half of fringe from each of 2 balls.

Using a double strand of Eros II loosely cast on 17 sts, leaving 9" tails.

Row 1: P1, *(yo, p2tog); repeat from * to end.

Repeat row 1 until almost out of yarn. Bind off loosely, again leaving 9" tails. Do not weave in the tails- make them part of the fringe.

Fringe

Using 2 strands for each fringe section, fold in half and attach at about 11 points evenly spaced along each short end of the shawl. Trim fringe.

©2012 Plymouth Yarn Company. 022712jbt