

ENCORE WORSTED Christmas Stocking



Size: about 6" x 14"

Materials: 1-100g ball each of Encore Worsted in Red #1386 & Green #054.

Needles: Size 6 & 8, plus size 8 double pointed needles, or those needed to achieve gauge. Beads for embellishment.

Gauge: 4.5 stitches = 1" over st st.

Note: When slipping stitches, always slip as if to purl, except for the SSK.

SSK = slip 1 stitch as if to knit, slip a second stitch as if to knit, then knit the 2 stitches together.

CUFF: Worked back & forth on needles to the Gusset. With smaller needles and Green, cast on 62 sts. Work in k2-p2 ribbing for 2", ending with a WS row. Change to larger needles and RED and begin working in st st. When total length of red is 2½", begin chart. When chart is finished, continue in red in st st until total length is 11½", ending with a WS row, and working k2tog at beginning & end of last row: 60 sts. Cut yarn. Move all sts to double pointed needles and sew up back seam. Reattach green yarn to 15 sts before the seam. Knit across these 15 sts and the next 15 sts. These 30 sts are the heel. Work on these 30 sts only as follows:

HEEL: Work back and forth in st st on these 30 sts for 23 rows, ending with a RS row.

TURN HEEL: Row 1: Purl to 2 sts beyond the center (17 sts), P2TOG, P1, TURN.

Row 2: Slip 1, K5, K2tog, K1, TURN.

Row 3: Slip 1, purl to 1 st. before the last turn (you'll see a small gap), P2tog, P1, TURN.

Row 4: Slip 1, knit to 1 st. before the last turn (look for the gap), K2tog, K1, TURN.

Repeat rows 3&4 until all sts at the ends are used up, ending with a knit row. There will be 18 sts left. Place them on a double pointed needle. Cut Green and reattach red. Begin working in the round.

GUSSET: Continuing to work on the same needle, pick up and knit 15 sts along the side of the heel (needle 1). Using a new needle, knit across the sts on the next 2 needles (needle 2). Using a new needle, pick up and knit 15 sts along the other side of the heel, and continue knitting to the center of the heel sts (9 sts) (needle 3). There should now be 24 sts on needles 1 & 3, and 30 sts on needle 2. The center of the heel is the beginning of the round, needle 2 contains the instep sts. Begin decreasing as follows:
Round 1: Knit.

ABBREVIATIONS: K = knit, P = purl, sts = stitch(es), k2tog = knit 2 sts together.

Round 2: Knit to within 3 sts of the end of the first needle, K2tog, K1. Knit across second needle. On third needle, K1, SSK, knit to end.

Repeat rounds 1 & 2 until there are 15 sts left on both needles 1 & 3. Needle 2 will remain at 30 sts since no decreases take place there. You will now be at 60 sts total. Center of heel is beginning of round. Begin to knit in the round again until you have worked 20 rounds.

TOE SHAPING: Change to Green, working 1 knit round in green before beginning decreases.

Begin decreasing as follows:

Round 1: On needle 1: knit to last 3 stitches, K2tog, K1. On needle 2: K1,SSK, knit to last 3 stitches, K2tog, K1. On needle 3: K1, SSK, knit to end (center of heel).

Round 2: Knit.

Repeat rounds 1 & 2 until there are 32 sts left (8 sts on needles 1 & 3, and 16 sts on needle 2).

KITCHNER STITCH:

Continuing to knit with needle 3, knit to the end of needle 1. There are now only 2 needles in use, 16 sts on each one.

Cut the yarn, leaving 18". Thread it onto a blunt needle. Hold the 2 needles parallel, you will now have a front needle and a back needle. Always keep the yarn beneath the needle as you work.

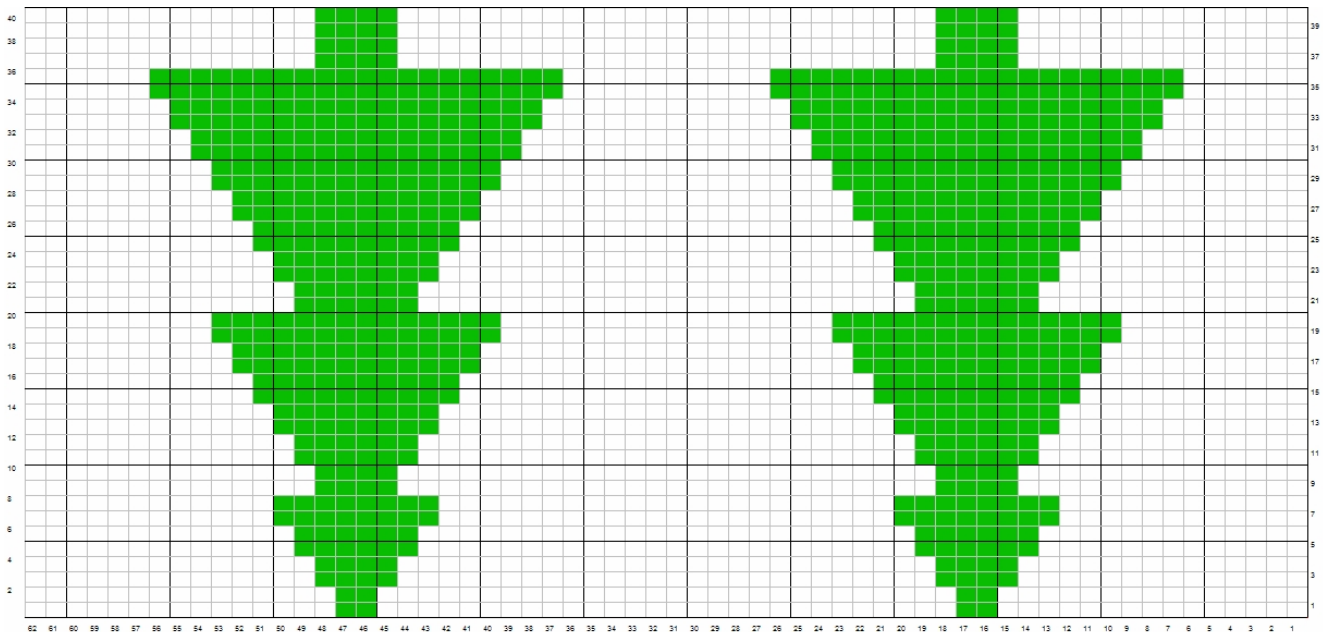
Step 1: Go into the first stitch on the front needle as if to knit, pull the stitch off the needle.

Step 2: Go into the second stitch on the front needle as if to purl, leave stitch on the needle.

Step 3: Go into the first stitch on the back needle as if to purl, pull the stitch off of the needle.

Step 4 : Go into the second stitch on the back needle as if to knit, leave the stitch on the needle.

Now you have 4 new stitches to work with. Repeat steps 1 - 4 until all stitches are woven. Anchor on inside, weave in ends. Trim tree as desired.



Work from right to left for odd number rows (knit). Work from left to right for even numbered rows (purl).
All white grid squares are red in yarn color.