

Free Pattern with Our Compliments

Find Inspiration: www.plymouthyarn.com

HEARTY HOMESTEAD TWEED Snowflake Hat



Approximate Finished Size:
19 ½" Brim

Materials:

Hearty Homestead Tweed:

1 – 100g ball EACH of 703 Brown Heather Tweed MC and 701 Natural Tweed CC

Gauge: 14 sts, 20 rows = 4" on US Size 10 (6mm) needle in st st *after blocking*,

3.75 sts= 1" in 1x1 rib worked in the round on US Size 9 (5.5mm) *slightly stretched*.

Needles/Notions: US Size 9 (5.5mm) and 10 (6mm) 16" circular needle, US Size 10 (6mm) DPNs, 1 st marker (m)

When working the chart, work all rounds from right to left.

1x1 Rib worked in the round

(Worked over an even number of sts)

Rnd 1: *K1, p1; rep from * around.

Rep this rnd for pattern st.

Begin

Brim

With smaller circular and MC, CO 72 sts. Work in 1x1 rib worked in the round for 1½".

Switch to larger circular and k 1 rnd.

Body

Work Fairisle Snowflake Chart rnds 1-23. Cut CC and work just in MC now and throughout. K 1 rnd.

Shape Crown

(Switch to DPNs when there are too few sts to fit comfortably around the circular.)

Rnd 1: *K7, k2tog; rep from * around. 64 sts on needle.

Rnd 2: *K6, k2tog; rep from * around. 56 sts on needle.

Rnd 3: *K5, k2tog; rep from * around. 48 sts on needle.

Rnd 4: *K4, k2tog; rep from * around. 40 sts on needle.

Rnd 5: *K3, k2tog; rep from * around. 32 sts on needle.

Rnd 6: *K2, k2tog; rep from * around. 24 sts on needle.

Rnd 7: *K1, k2tog; rep from * around. 16 sts on needle.

Rnd 8: *K2tog; rep from * around. 8 sts on needle.

Cut yarn, leaving a 6" tail. Thread the tail through the rem sts and draw tightly. Fasten off.

Pom pom (Optional)

Holding both the CC and MC tog, make a 2 ½" pom pom with the rem yarn. Attach to top of hat. Weave in all ends.

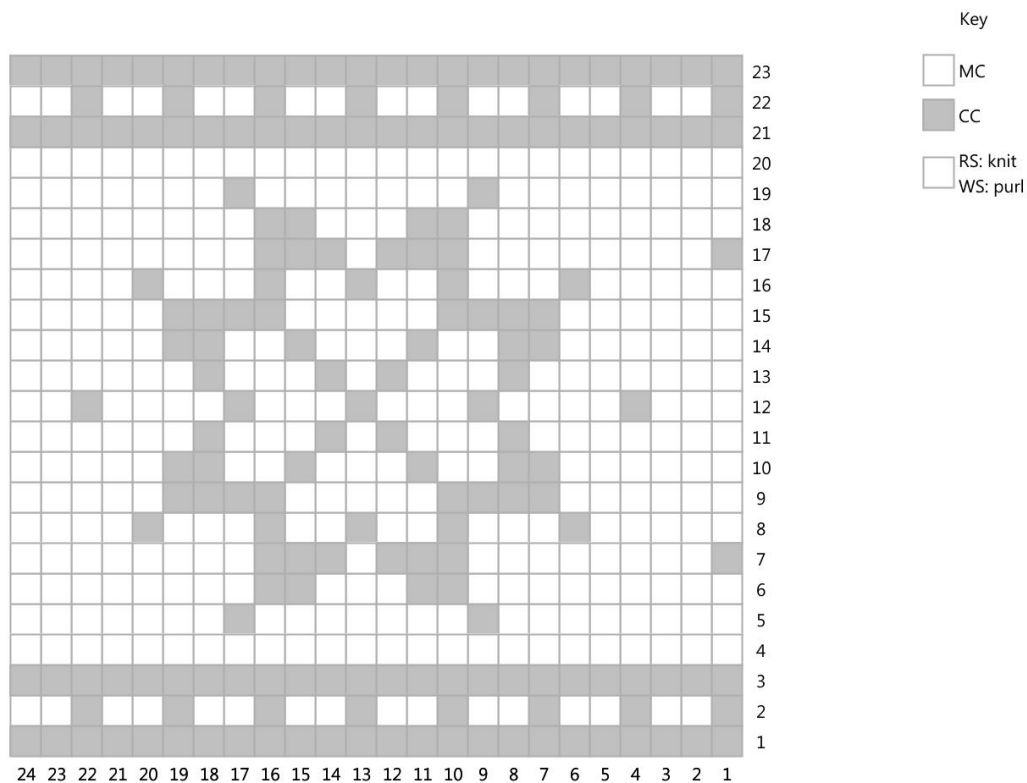
©2023 Plymouth Yarn Company. 041823jbt

ABBREVIATIONS: beg= begin(ning), BO= bind off, CC= contract color, CO= cast on, mm= millimeter, k = knit, k2tog= knit two sts together, m= marker, MC= main color, mm= millimeter, p = purl, Rep/rep= repeat, rnd= round, sl= slip, st(s) = stitch(es), st st= stockinette stitch, tog= together

Free Pattern with Our Compliments

Find Inspiration: www.plymouthyarn.com

Fairisle Snowflake Chart



ABBREVIATIONS: beg= begin(ning), BO= bind off, CC= contract color, CO= cast on, mm= millimeter, k = knit, k2tog= knit two sts together, m= marker, MC= main color, mm= millimeter, p = purl, Rep/rep= repeat, rnd= round, sl= slip, st(s) = stitch(es), st st= stockinette stitch, tog= together