

Free Pattern with Our Compliments

Find Inspiration: www.plymouthyarn.com

SOFT SERVE Hearts Baby Blanket

Actual Finished Dimensions:
Approx. 29" x 33"

Materials:

Soft Serve: 4 - 100g balls,
shown in color 601 Strawberry
Gauge: Approx. 18 st = 4" on
size 7 needle.

Needles: Size US 6 circular
needle, 24" or longer; size US 7
circular needle, 24" or longer.

Heart Blanket:

With smaller circular needle
cast on 127 sts. Knit 10
rows.

Change to larger circular
needle.

Row 1: k6, pm, knit to last
6 sts, pm, k6.

Row 2: k6, slip marker, purl
across to marker, slip
marker, k6.

Repeat rows 1 and 2 of
stockinette st 3 times.

*Note: keep first six and
last six sts in garter st for
entire afghan to form border.*

Heart Pattern:

Begin on RS: k6 (border
sts), work 3 stockinette sts, work the 1st row of the graph, repeating for a total of 7 hearts,
work 3 more stockinette sts, end k6 (border sts). At the widest point, each heart is 13 sts
wide, and separated by 3 st sts from the adjacent hearts, and by 3 st sts from each border.
Continue in this manner for rows 2 through 21 of the graph to form one set of 7 hearts.



Free Pattern with Our Compliments

Find Inspiration: www.plymouthyarn.com

Next, work in st st with garter st borders until blanket measures 27" from cast-on. Then work another set of 7 hearts, turning the graph upside down, ie, so the points of the 7 hearts will be closest to the edge of the blanket.

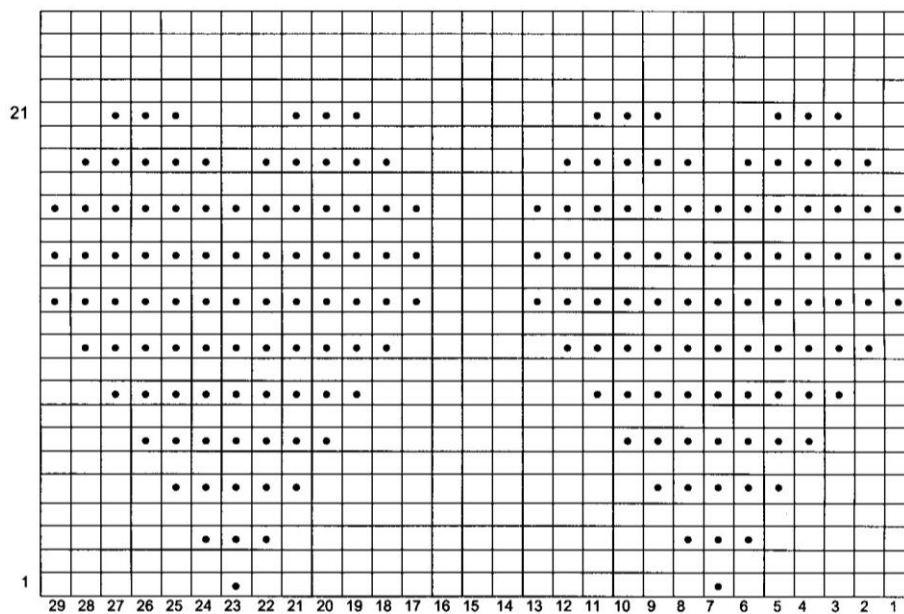
Finishing:

Work 8 more rows of st st with garter st border. Finish with smaller needle and 10 rows of garter st.

Bind off. Weave in all ends.

©2022 Plymouth Yarn Company. Designed by Lainie Hering, Cutie Pie Knits.

093022jbt



Heart Graph

(Right Side Facing)

• = use purl stitch on RS

If box is empty, knit on RS, purl on WS.

Separate the hearts from the border, and from each other(as shown), by 3 stockinette sts.

ABBREVIATIONS:MC = main color, CC = contrasting color, K = knit, P = purl, st(s) = stitch(es), st st = stockinette st, garter st = knit all rows, RS = right side, WS = wrong side, BO = Bind off, k2tog = knit 2 sts together, P2tog = purl 2 sts together, M1=increase by making 1 st, pss0 = pass the slip stitch over, sl 1 = slip one st.